

A photograph of a house with solar panels installed on its roof. The panels are dark blue and cover a significant portion of the roof area. The house has a light-colored tiled roof and a dormer window. The background shows a clear blue sky and some distant buildings.

Caracterizando proyectos locales y comunitarios de energía

Dr Fabián Fuentes González

Una muy breve presentación...

OVERVIEW

Una pincelada
respecto a
experiencias
Británicas en
energía
comunitaria



Algunos
ejemplos de la
relación entre
energía
comunitaria y
energía local



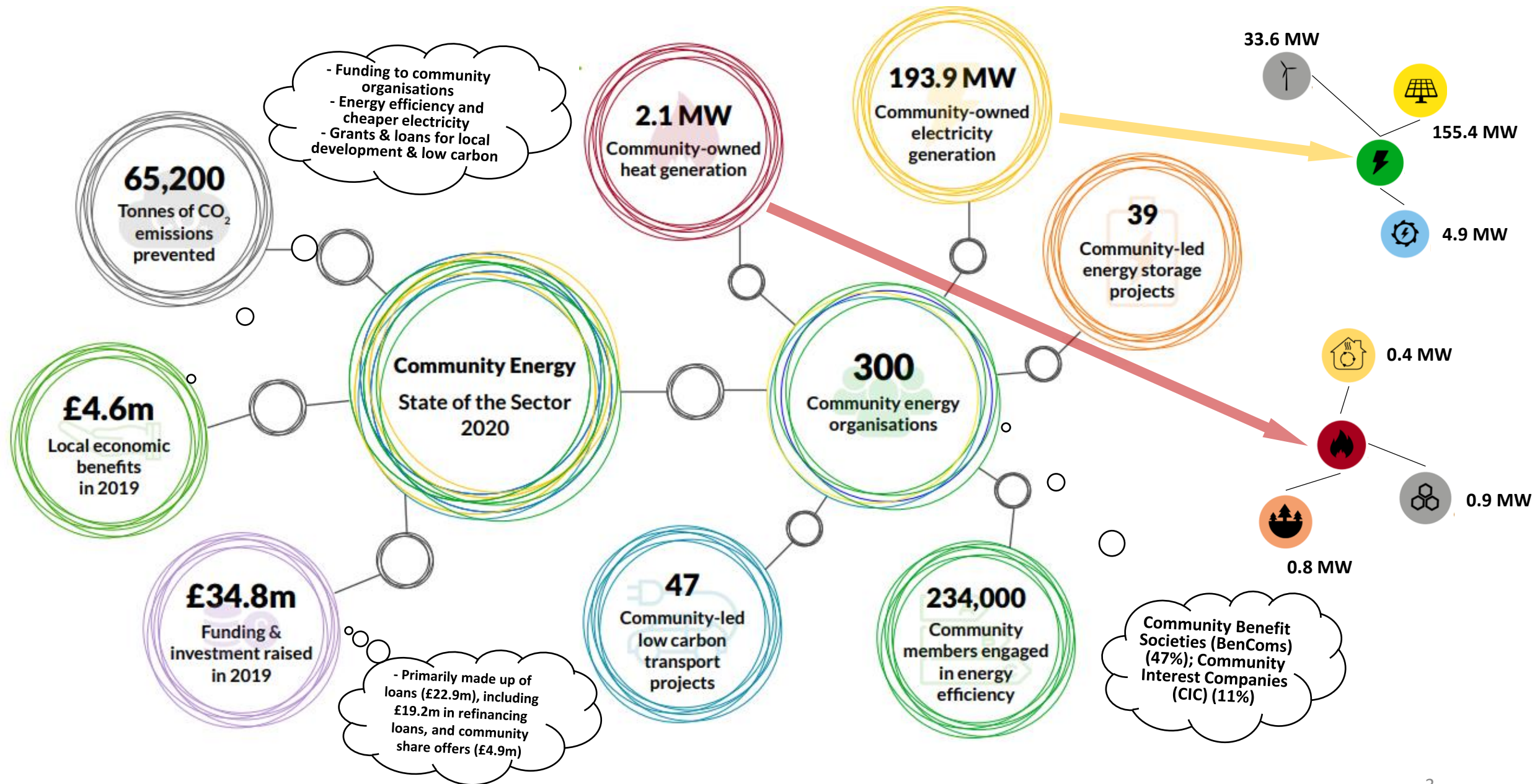
Formas de como
caracterizar
energía local



Conclusion

Conclusiones

Energía comunitaria en Inglaterra, Gales e Irlanda del Norte



Un ejemplo...

<https://www.hecommunityenergy.org/>



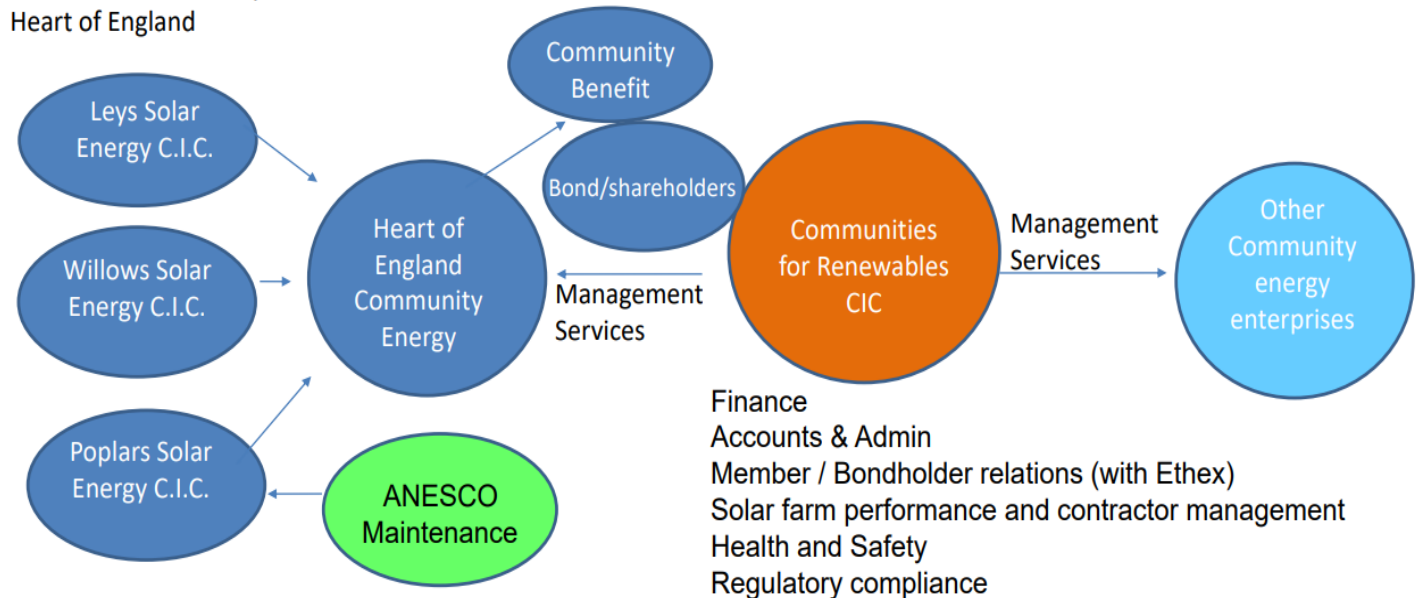
Community Fund

Heart of England Community Energy recycles its profits back into the Heart of England community by supporting local charities and projects with a positive social and environmental impact. Our goal to donate approximately £2.7 million to good causes over the projects' lifetime with an intended minimum of £30,000 per year.

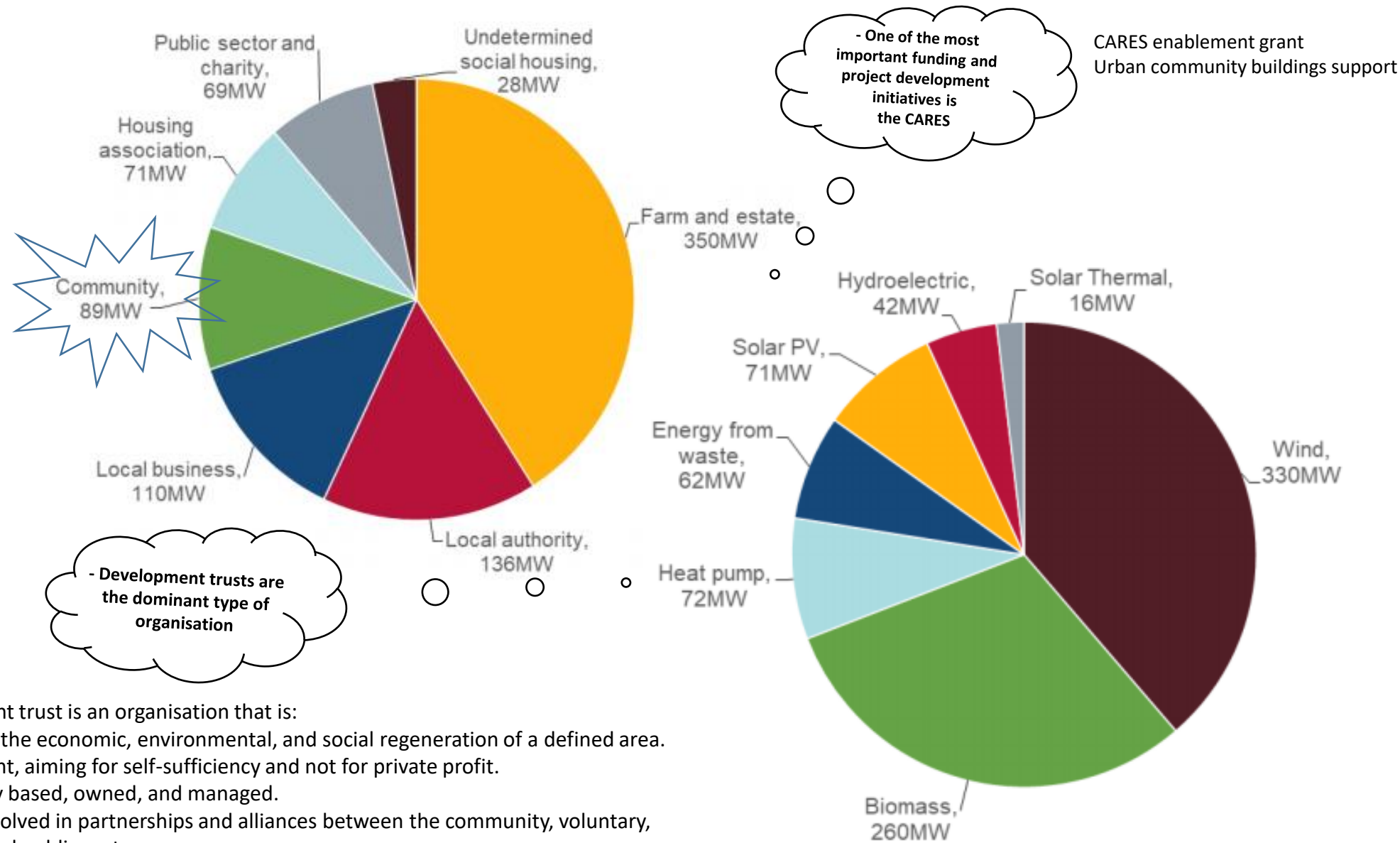
We currently provide funding to Harbury e-Wheels, a Warwickshire-based community transport charity, and Act On Energy to help local households struggling with fuel poverty.

We also support SolarAid, an international charity which combats poverty and climate change through providing access to solar lights in Uganda, Malawi and Zambia.

Subsidiaries owned by
Heart of England



Energía comunitaria en Escocia



A development trust is an organisation that is:

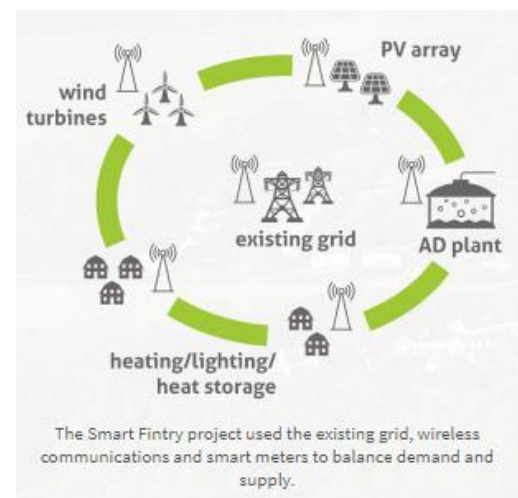
1. Engaged in the economic, environmental, and social regeneration of a defined area.
2. Independent, aiming for self-sufficiency and not for private profit.
3. Community based, owned, and managed.
4. Actively involved in partnerships and alliances between the community, voluntary, and private and public sectors.

Otro ejemplo...

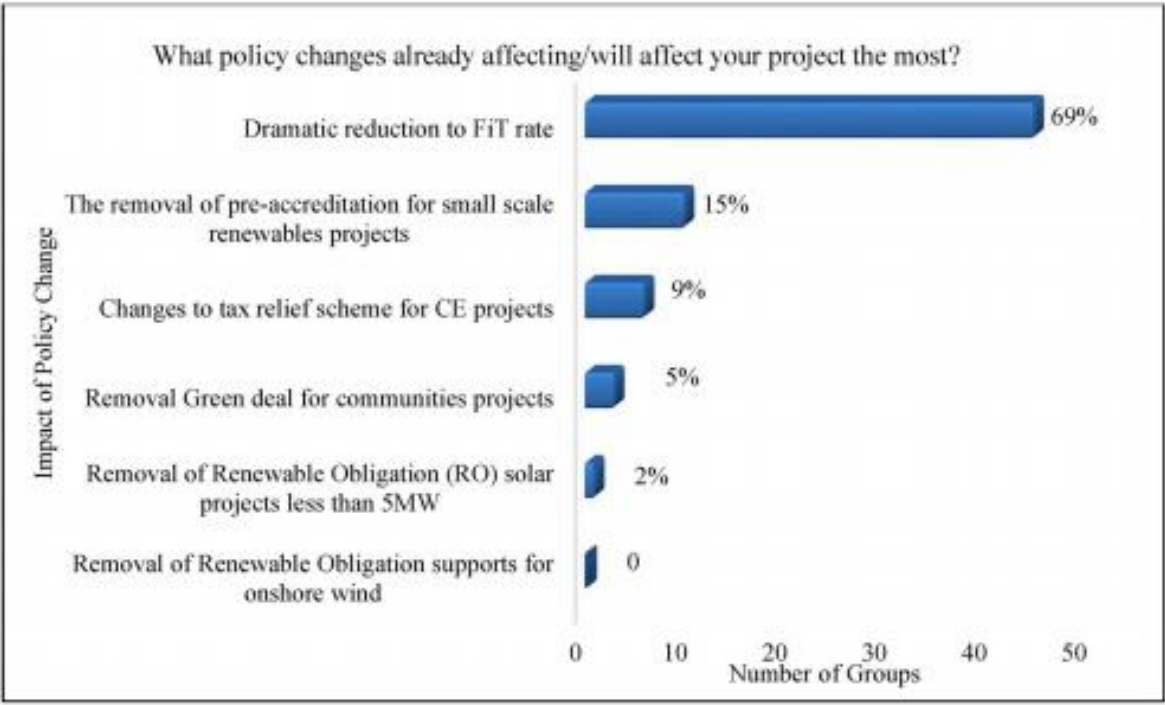
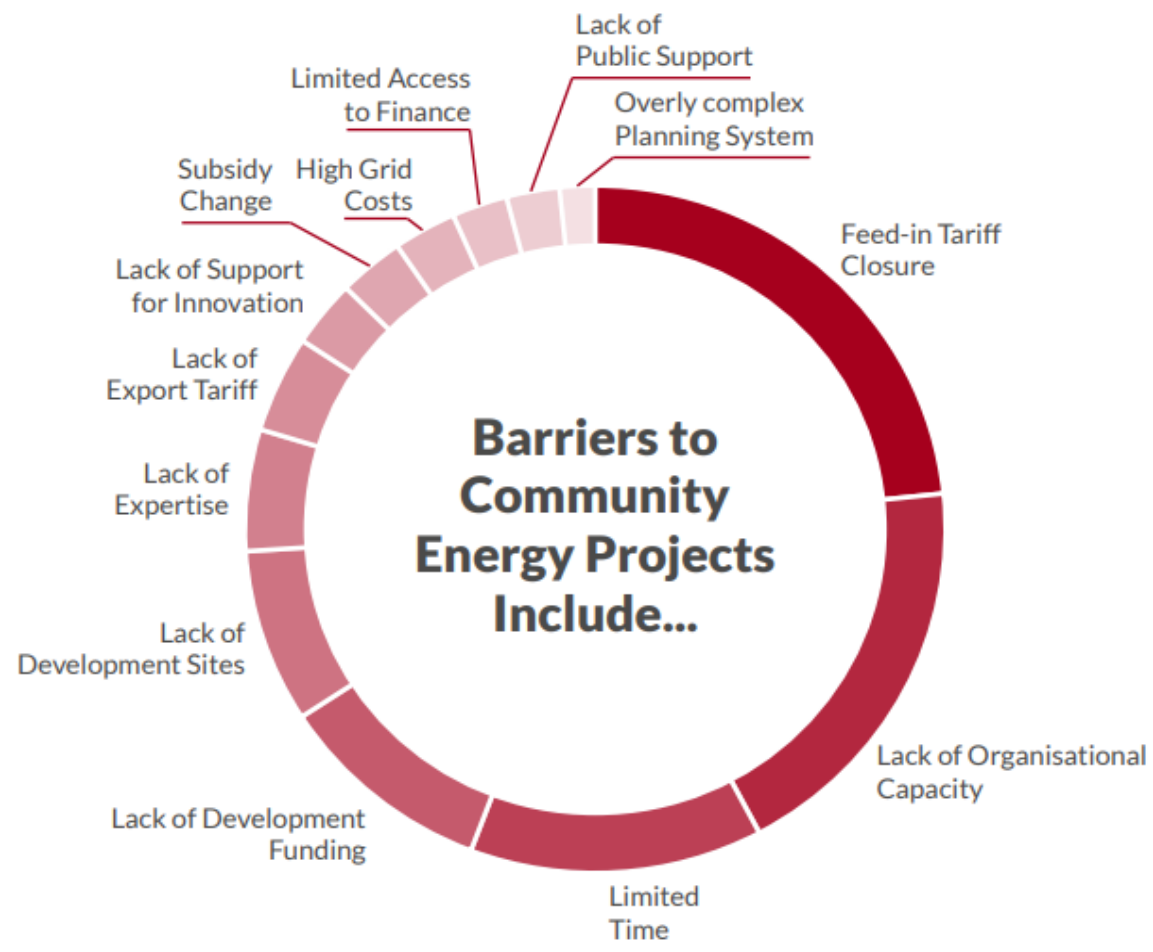


<http://fintrydt.org.uk/about/>

- Over 200 members (out of an adult population of approximately 500)
- An elected board of directors all drawn from the membership
- Company limited by guarantee and has charitable status
- Membership and the area of benefit are limited to the Fintry Community Council boundary
- The trust has three subsidiaries:
 - **Fintry Renewable Energy Enterprise**; production sharing agreement at the nearby Earlsburn Windfarm;
 - **Fintry Community Energy**; owns and operates a small biomass district heating scheme supplying heat to 20 households;
 - **Fintry Renewable Energy Distribution** which operated the Smart Fintry project.



Las principales barreras para la energía comunitaria en Reino Unido



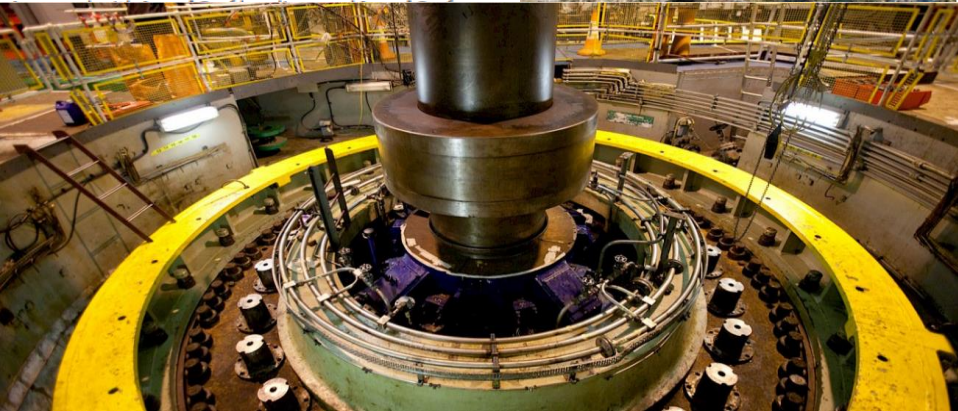
Energía comunitaria y Energía local: mundos lleno de matices

The electric mountain

First Hydro Company
www.fhc.co.uk

A privately-owned large pumped storage initiative.

“First Hydro Company places high priority on its role as a patron for a wide range of initiatives that benefit local communities, education, sport, the arts and the environment... It is (also) committed to a major renovation of the Electric Mountain Visitor Centre (EMVC) to create a modern, appealing visitor attraction with facilities better suited to the needs of users... First Hydro also assist many groups, clubs and staff through their Electric Mountain Visitor Centre by awarding sets of family tickets, in order to assist in the raising of funds for particular causes.”



How do wind farms benefit local communities?

Vattenfall invests more than £2.5 million annually into local communities hosting wind farm projects.

What is community investment?

Our investment in local communities comes in many forms. Community benefit packages, skills, training and education programmes, sponsorship, shared ownership and benefits in kind are most common.

BARRA COMMUNITY WIND TURBINE CASE STUDY

OVERVIEW

Community Group: Coimhearsnachd Bharraigh agus Bhatarsaidh (Barra & Vatersay) Community Ltd (parent company), Barra & Vatersay Wind Energy Ltd (subsidiary)
Technology: Wind
Location: Isle of Barra
Date of completion: February 2014

Coimhearsnachd Bharraigh agus Bhatarsaidh (Barra & Vatersay) Community Ltd (parent company), Barra & Vatersay Wind Energy Ltd (subsidiary) Community Trust are private companies limited by shares. All the shares are owned by the parent company.

BACKGROUND

The Barra Wind Turbine was initially



Armistead



Local Planning Authority: [South Lakeland District Council](#)

Postcode of nearby property: LA6 2QB

Site status: Operational

Number of turbines: 6

Tip height: 100m

Electricity generation capacity: Up to c12MW

Lifetime of wind farm: 25 years plus two years for construction and decommissioning

History: Banks Renewables' Armistead wind farm consists of six 100m to tip turbines and began generating electricity in February 2013



Community Fund

The Armistead Wind Farm Community Fund now receives £13,763.93 each year. The Community Fund committee representatives include members from the local parish councils as well as the district and county councillors. For more information on the Armistead Wind Farm Community Fund, please click [here](#).

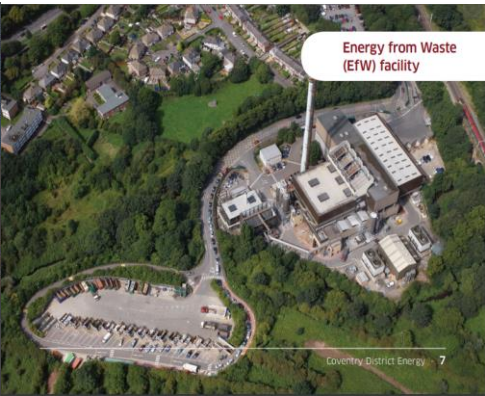
Before applying for a grant

Applicants **MUST** contact Sarah McIntyre, Fund Manager at the CDCF, before applying for a grant. Tel **0191 378 6342** or email **APPLY HERE: Grant applications have to be made on line via the County Durham Community Foundation (CDCF) website.**

Coventry District Energy



Thermal Storage Vessel

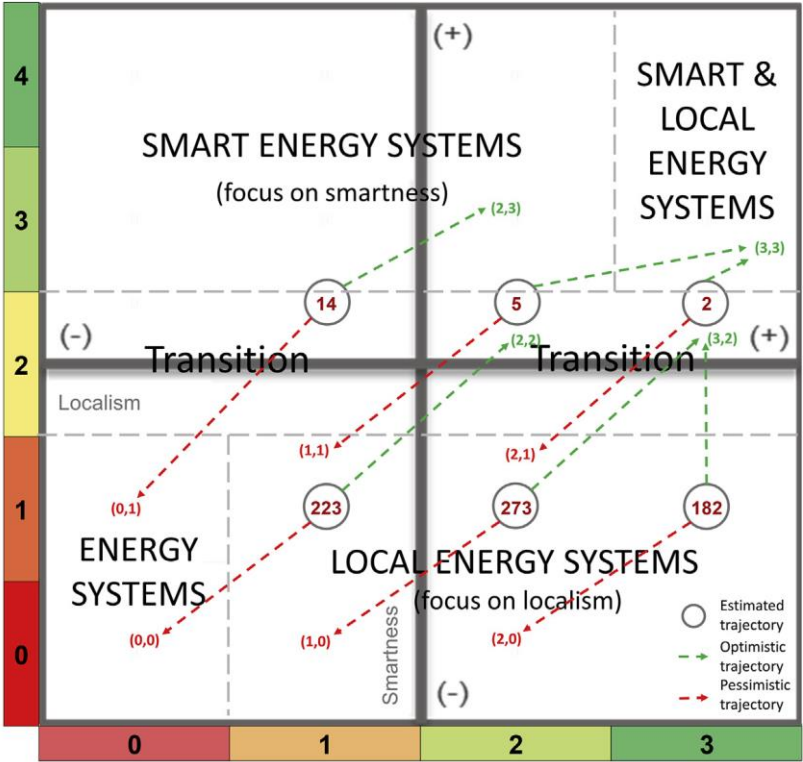


Energy from Waste (EfW) facility

Caracterizando “local energy”

Smartness was estimated using a five-point scale:

- Use of real-time information and communication technologies
- Automation of aspects of business operation and systems regulation
- Use of machine learning or artificial intelligence to inform decision-making and engage people.

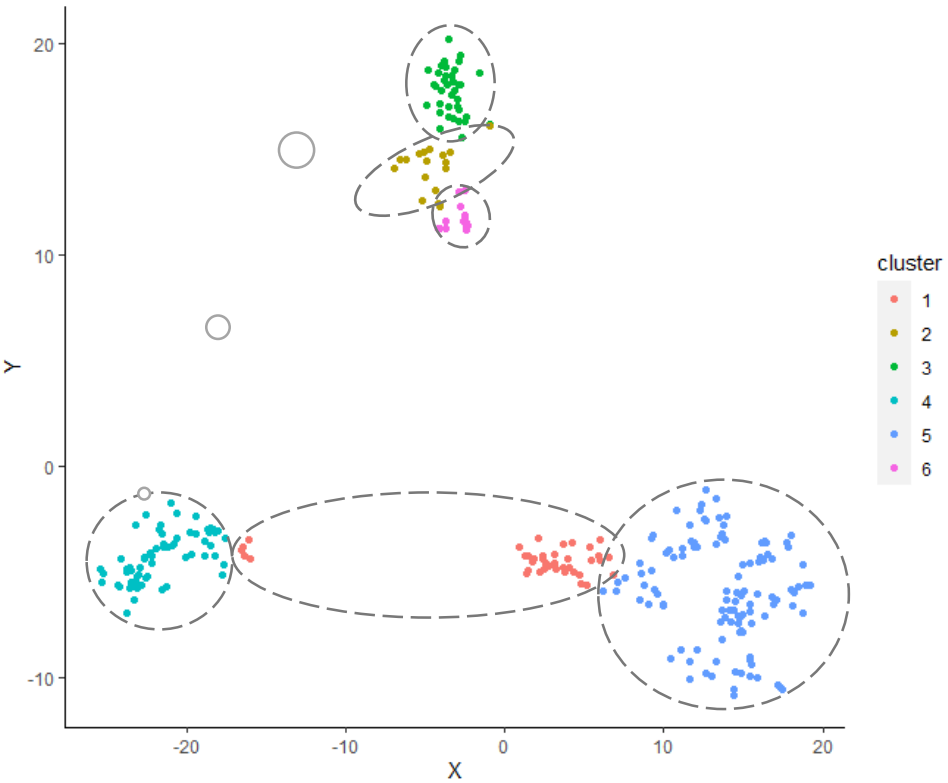


Localism was estimated using a four-point scale:

- Relationships with stakeholders (via global participation in projects)
- Asset ownership
- Decision-making processes involvement at a local level

Highly-local energy businesses (Level 3):

- marginally contribute to sectoral assets and turnover;
- high reliance on (long-term) debt is observed;
- debt seems critical for the development of (many of) these highly-local energy businesses;
- lower profitability compared to other LEBs



Financial statements

Caracterizando “local energy”

		Assets	Turnover	Debt	Efficiency	Profitability
Ownership	Private					
	Municipal					
	Third sector					
	Universities					
	Community interested					
		Assets	Turnover	Debt	Efficiency	Profitability
Localism / Smartness estimates	1-Participation/1-Acceptable					
	1-Participation/2-Improved					
	2-Involvement/1-Acceptable					
	2-Involvement/2-Improved					
	3-Engagement/1-Acceptable					
	3-Engagement/2-Improved					

Concluyendo...

- Diversidad de proyectos comunitarios en el Reino Unido con variados arreglos societales o corporativos
- Desafíos existentes en cuanto a la no dependencia de esquemas de ayuda gubernamental; oportunidad para diversificar? Role clave de finanzas (publicas/privadas?), partnerships
- Existen proyectos privados que muestran distintos grados de involucramiento con la comunidad, sin ser las comunidades propietarias de activos; mas matices a la hora de definir
- Definir y caracterizar energía comunitaria parece ser mucho menos complicado; energía local comprendería una vertiente mas amplia de proyectos, pero aun así se puede caracterizar, aunque queda mucho trabajo por hacer
- Negocios locales de energía mas inteligentes e integrados con otros vectores de energía podrían potencialmente contribuir a cumplir objetivos climáticos, reducir pobreza energética, mejorar la riqueza localmente vía proyectos, financiamiento a causas nobles o educación, entre otros.

A photograph of a residential roof with solar panels and skylights. The roof is covered with dark blue solar panels, and there are several skylights visible. The background shows a clear blue sky and some distant buildings.

Caracterizando proyectos locales y comunitarios de energía